

EconoMaster[®]

Your Value Solution

Replacement Motors
for Residential and Light Commercial HVAC/R Applications

New!
460V Motors



Everything you need...nothing you don't

CONDENSER FAN MOTORS

Features

- Electrically Reversible
- Energy Efficient
- 60°C Ambient
- Single Phase
- UL/CSA Approved
- Class "B" Insulation
- Auto Protector
- 26" Lead Length
- 60 Hz

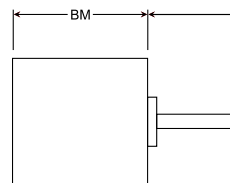


Single Speed - Totally Enclosed - Condenser Fan

Stock No.	HP	Volts	Rated Amps	Bearings	RPM	"BM" Dim.	Shaft Size	Capacitor (MFD) 370V
EM3403	1/6	208-230	1.1	Ball	825	4.11	1/2 x 6"	5
EM3404	1/4	208-230	1.5	Ball	825	4.61	1/2 x 6"	5
EM3405	1/3	208-230	1.8	Ball	825	5.11	1/2 x 6"	7.5
EM3746	1/2	208-230	2.7	Ball	825	5.61	1/2 x 6"	10
EM3727	1/6	208-230	1.3	Ball	1075	3.86	1/2 x 6"	5
EM3728	1/4	208-230	2.0	Ball	1075	4.11	1/2 x 6"	5
EM3729	1/3	208-230	2.5	Ball	1075	4.61	1/2 x 6"	7.5
EM3730	1/2	208-230	3.5	Ball	1075	5.11	1/2 x 6"	10
EM3731	3/4	208-230	5.3	Ball	1075	5.36	1/2 x 6"	10

Cross Reference Guide

EconoMaster Stock No.	Wagner/Diversitech	Smart Electric	Mars
EM3403	n/a	n/a	10403/10203
EM3404	WG840204	n/a	10404/10204
EM3405	WG840205	n/a	10405/10205
EM3746	n/a	n/a	10746
EM3727	WG840727	SE3727	10727/10732
EM3728	WG840728	SE3728	10728/10733
EM3729	WG840729	SE3729	10729/10734
EM3730	WG840730	SE3730	10730/10735
EM3731	WG840731	SE3731	10731/10736



CONDENSER FAN MOTORS

Features

- 70°C Ambient
- Class "F" Insulation
- Electrically Reversible
- Energy Efficient
- Single Phase
- Auto Protector
- 26" Lead Length
- UL/CSA Approved



HI Temp™ 70°C – Single Speed – Totally Enclosed – Condenser Fans

Stock No.	HP	Volts	Rated Amps	Bearings	RPM/SPD	"BM" Dim.	Shaft Size	Capacitor (MFD) 370V
EM3403F	1/6	208-230	1.0 - 1.1	Ball	825	4.11	1/2 x 6"	5
EM3404F	1/4	208-230	1.3 - 1.4	Ball	825	4.61	1/2 x 6"	5
EM3405F	1/3	208-230	1.6 - 1.8	Ball	825	5.11	1/2 x 6"	7.5
EM3746F	1/2	208-230	2.2 - 2.5	Ball	825	5.61	1/2 x 6"	10
EM3727F	1/6	208-230	1.0 - 1.1	Ball	1075	3.86	1/2 x 6"	5
EM3728F	1/4	208-230	1.8 - 2.0	Ball	1075	4.11	1/2 x 6"	5
EM3729F	1/3	208-230	2.2 - 2.5	Ball	1075	4.61	1/2 x 6"	7.5
EM3730F	1/2	208-230	3.0 - 3.5	Ball	1075	5.11	1/2 x 6"	10
EM3731F	3/4	208-230	4.6 - 5.3	Ball	1075	5.36	1/2 x 6"	10
EM3736F	1/4	460	1.0	Ball	1075	4.74	1/2 x 6"	7.5
EM3737F	1/3	460	1.3	Ball	1075	5.24	1/2 x 6"	7.5
EM3738F	1/2	460	1.5	Ball	1075	5.61	1/2 x 6"	10

HI Temp™ 70°C – Multi-Horsepower – Totally Enclosed – Condenser Fans – 36" Lead Length

EM3469F	1/3,1/5	208-230	1.9, 1.2	Ball	825/2	5.24	1/2 x 6"	10 or 7.5
EM3465F	1/3,1/5	208-230	2.6, 1.4	Ball	1075/2	4.86	1/2 x 6"	7.5 or 5
EM3468F	1/2,1/4	208-230	3.6, 1.7	Ball	1075/2	5.24	1/2 x 6"	12.5 or 10

4-in-1® 70°C – Simple, Two Wire Connection – 48" Lead Length

EM3459F	1/3-1/8	208-230	1.8 - 2.0	Ball	825	4.86	1/2 x 6.7"	7.5
EM3458F	1/3-1/6	208-230	1.8 - 2.0	Ball	1075	4.11	1/2 x 6.7"	7.5
EM3209F	1/3-1/8	460	1.0	Ball	825	5.24	1/2 x 6"	7.5

Cross Reference Guide

EconoMaster Stock No.	Wagner/Diversitech	Smart Electric	Mars	EconoMaster Stock No.	Wagner/Diversitech	Smart Electric	Mars
EM3403F	n/a	n/a	20403	EM3736F	n/a	n/a	20836
EM3404F	WG840204HT	n/a	20404	EM3737F	n/a	n/a	20837
EM3405F	WG840205HT	n/a	20405	EM3738F	n/a	n/a	20838
EM3746F	n/a	n/a	20746	EM3469F	n/a	n/a	20469
EM3727F	n/a	n/a	20727	EM3465F	n/a	n/a	20465
EM3728F	WG840728HT	n/a	20728	EM3468F	n/a	n/a	20468
EM3729F	WG840729HT	n/a	20729	EM3459F	n/a	n/a	20459
EM3730F	WG840730HT	n/a	20730	EM3458F	n/a	n/a	20458
EM3731F	WG840731HT	n/a	20731	EM3209F	n/a	n/a	20884

FURNACE BLOWER MOTORS

Features

- Electrically Reversible
- Energy Efficient
- 40°C Ambient
- Single Phase
- Class "B" Insulation
- Auto Protector
- 26" Lead Length
- UL/CSA Approved

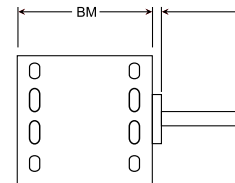


Three Speed - Blower Motors

Stock No.	HP	Volts	Rated Amps	Bearings	RPM/SPD	"BM" Dim.	Shaft Size	Capacitor (MFD) 370V
EM3583	1/4	115	4.2-2.4-2.0	Sleeve	1075/3	3.99	1/2 x 4"	5
EM3584	1/4	208-230	2.0-1.1-0.9	Sleeve	1075/3	3.99	1/2 x 4"	5
EM3585	1/3	115	5.5-3.0-2.0	Sleeve	1075/3	4.36	1/2 x 4"	7.5
EM3586	1/3	208-230	2.8-1.7-1.2	Sleeve	1075/3	4.36	1/2 x 4"	5
EM3587	1/2	115	7.5-4.5-3.0	Sleeve	1075/3	4.86	1/2 x 4"	10
EM3588	1/2	208-230	3.6-2.3-1.6	Sleeve	1075/3	4.86	1/2 x 4"	10
EM3589	3/4	115	10.2-7.3-4.5	Sleeve	1075/3	5.36	1/2 x 4"	15
EM3590	3/4	208-230	5.5-4.5-3.2	Sleeve	1075/3	5.36	1/2 x 4"	10

Cross Reference Guide

EconoMaster Stock No.	Wagner/Diversitech	Smart Electric	Mars
EM3583	WG840583	SE3583	10583
EM3584	WG840584	SE3584	10584
EM3585	WG840585	SE3585	10585
EM3586	WG840586	SE3586	10586
EM3587	WG840587	SE3587	10587
EM3588	WG840588	SE3588	10588
EM3589	WG840589	SE3589	10589
EM3590	WG840590	SE3590	10590



MULTI-HORSEPOWER MOTORS

Features

- Electrically Reversible
- Energy Efficient
- 60°C Ambient
- Single Phase
- UL/CSA Approved
- Class “B” Insulation
- Auto Protector
- Rheem Holes in Shell
- 60 Hz
- 36” Lead Length



Multi-horsepower - Totally Enclosed - Condenser Fan

Stock No.	HP	Volts	Rated Amps	Bearings	RPM/SPD	“BM” Dim.	Shaft Size	Capacitor (MFD) 370V
EM3469	1/3,1/5	208-230	1.9,1.2	Ball	825/2	5.24	1/2 x 6”	10 or 7.5
EM3465	1/3,1/5	208-230	2.8,1.7	Ball	1075/2	4.86	1/2 x 6”	7.5 or 5
EM3468	1/2,1/4	208-230	3.9,1.6	Ball	1075/2	5.24	1/2 x 6”	12.5 or 10

4-in-1 – Simple, two wire connection – 48” lead length

EM3459	1/3-1/8	208-230	2.1	Ball	825	4.86	1/2 x 6.7”	7.5
EM3458	1/3-1/6	208-230	2.0	Ball	1075	4.11	1/2 x 6.7”	7.5

Features

- Electrically Reversible
- Energy Efficient
- 40°C Ambient
- Single Phase
- UL/CSA Approved
- Class “B” Insulation
- Auto Protector
- 38” Lead Length
- Rheem Holes in Shell

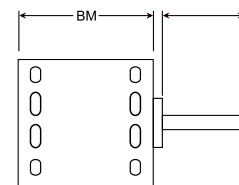
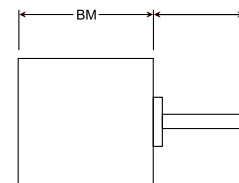


Four Speed - Multi-horsepower - Blower Motors

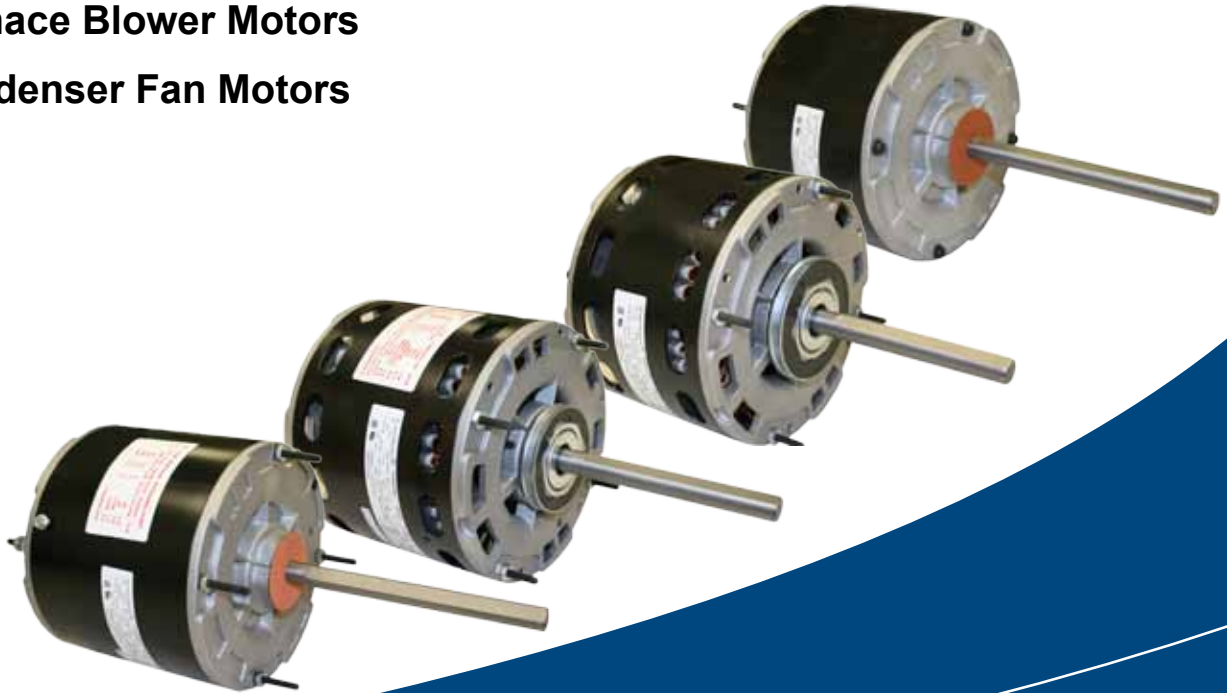
Stock No.	HP	Volts	Rated Amps	Bearings	RPM/SPD	“BM” Dim.	Shaft Size	Capacitor (MFD) 370V
EM3463	1/2-1/6	115	7.0	Sleeve	1075/4	4.86	1/2 x 4.5”	10, 7.5, 5
EM3464	1/2-1/6	208-230	3.9	Sleeve	1075/4	4.86	1/2 x 4.5”	10, 7.5, 5
EM3466	3/4-1/5	115	9.1	Sleeve	1075/4	4.86	1/2 x 4.5”	10, 7.5, 5
EM3467	3/4-1/5	208-230	3.9	Sleeve	1075/4	4.86	1/2 x 4.5”	10, 7.5, 5

Cross Reference Guide

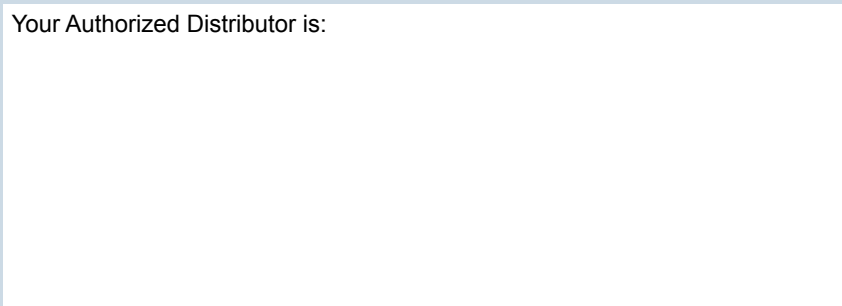
EconoMaster Stock No.	Wagner/ Diversitech	Smart Electric	Mars
EM3469	WG840469	SE3469	10469
EM3465	WG840465	SE3465	10465
EM3468	WG840468	SE3468	10468
EM3459	n/a	n/a	10459
EM3458	n/a	n/a	10458
EM3463	WG840463	SE3463	10463
EM3464	WG840464	SE3464	10464
EM3466	WG840466	SE3466	10466
EM3467	WG840467	SE3467	10467



- HI Temp™ – Condenser Fan Motors
- Multi-Horse Power Motors
- Furnace Blower Motors
- Condenser Fan Motors



Your Authorized Distributor is:



EconoMaster®
Everything you need...nothing you don't

Regal Beloit America, Inc.
1325 Heil Quaker Blvd.
LaVergne, TN 37086
PH: 800-672-6495
FAX: 800-468-2062